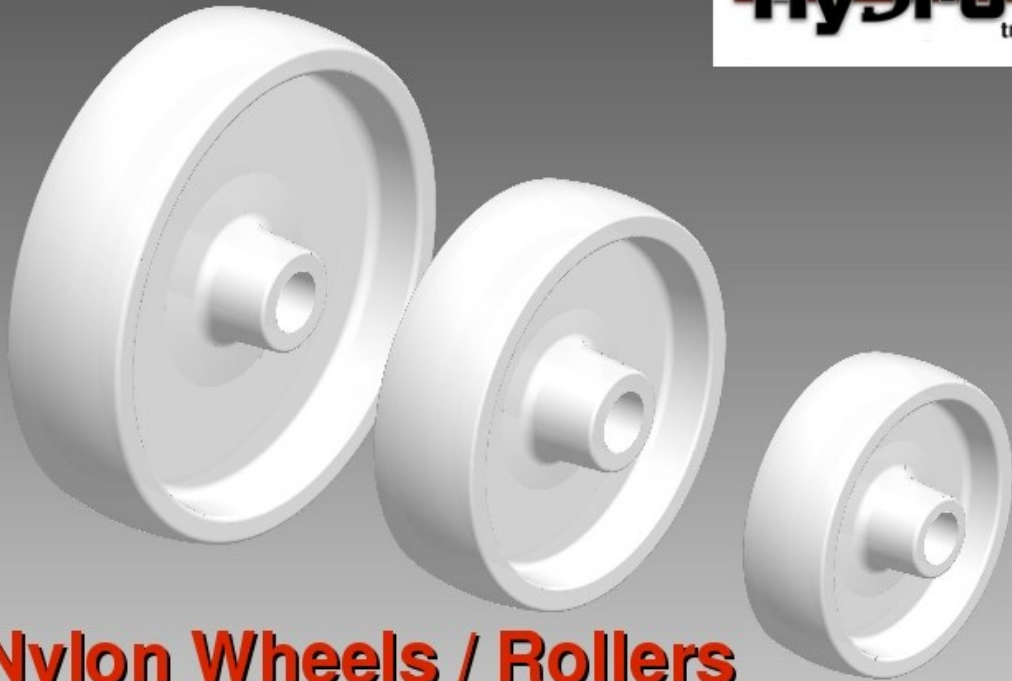


The Rybro logo features the brand name in a bold, black, sans-serif font. The letter 'y' is stylized with a horizontal line passing through its middle. A small 'tm' trademark symbol is positioned to the right of the main text.

## **Nylon Wheels / Rollers**

### Uses:

- General purpose castor wheel
- Pallet truck wheel / roller

### Advantages:

- High static load
- Durable
- Resistant to most liquids
- Good allround performer

Operating Temperature

**8°C to 80°C**

High Heat Option

**8°C to 200°C**

Manufactured by  
Manufactured by

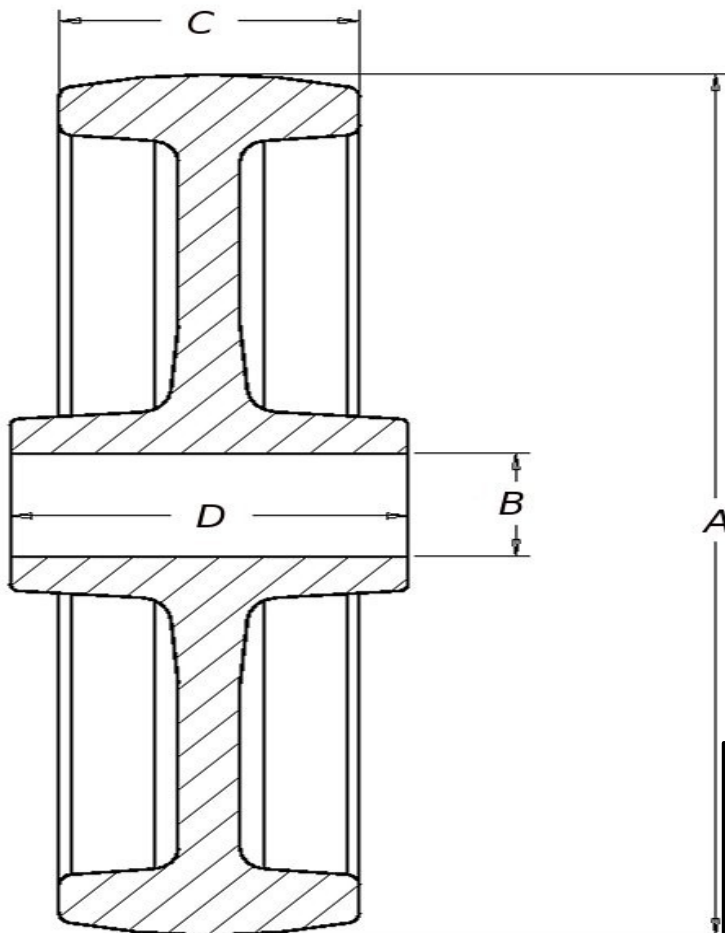
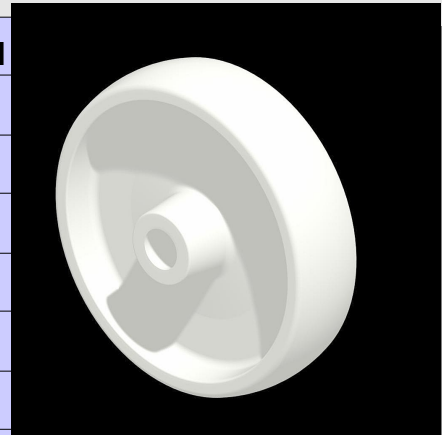


IAN BROWN ENGINEERING cc



# Nylon Castor Wheels - technical specifications Standard Series

Code	A	B	C	D	Shaft	Load
WN32	32	5.5	10	20	5	15
WN38	38	6.5	12	20	6	25
WN50	50	6.5	16	36	6	40
WN63	63	10	20	36	9.5	75
WN75	75	13	25	36	12.7	75
WN100	100	14.5	30	46	14	125
WN100U	100	12 or 12.5	30	38	11.5 or 12	125
WN125	125	14.5	32	46	14	200



**High Heat Option  
Available on Request**

**Minimum  
Quantities apply**

Manufactured by  
Manufactured by

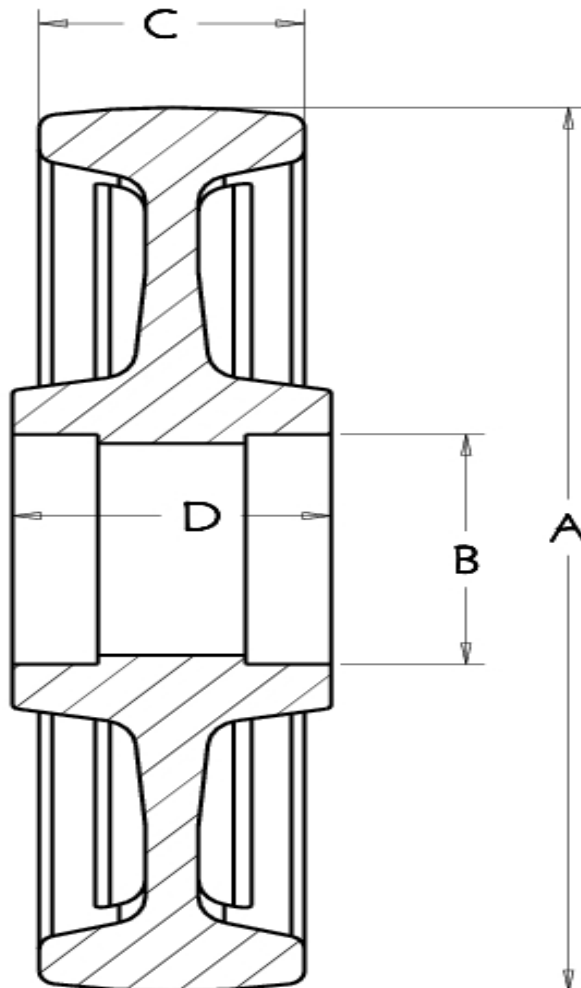
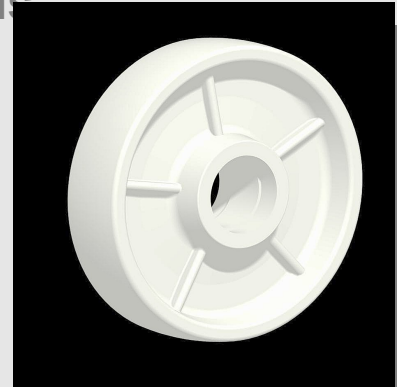


IAN BROWN ENGINEERING cc



## Nylon Castor Wheels / Steering Wheels - technical specifications (Heavy Duty)

Code	A	B	C	D	Load
WN150S	150	47	50	60	500
WN175S	175	47	45	56	500
WN190S	190	47	45	56	500



**High Heat Option  
Available on Request**

**Minimum  
Quantities apply**

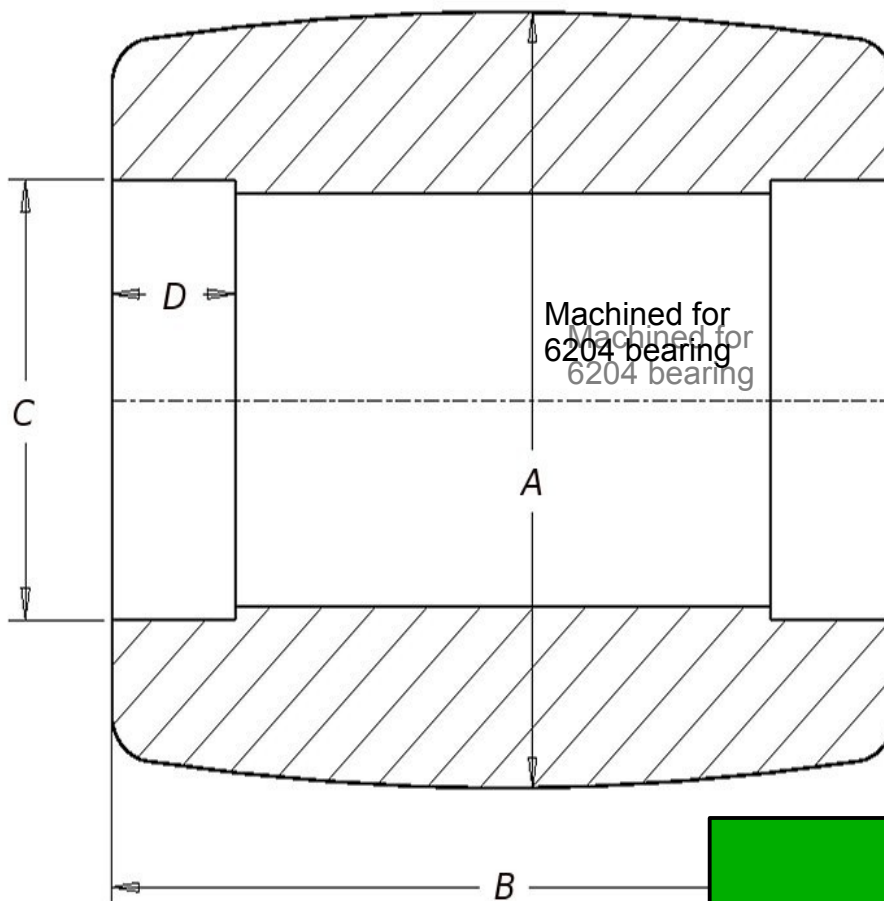
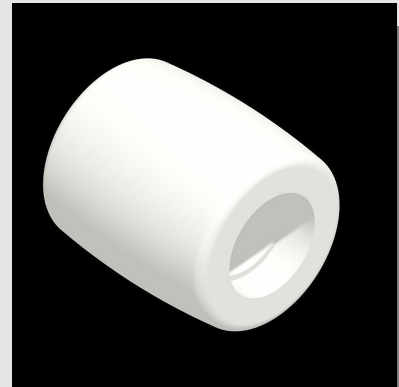
Manufactured by  
Manufactured by



IAN BROWN ENGINEERING cc

## Nylon Pallet Rollers - technical specifications

Code	A	B	C	D	Shaft	Load	Type
WN6580	80	60	47	15	20	500	Flat
WN7577	77	70	47	15	20	500	Convex
WN7580	80	70	47	15	20	500	Flat
WN10080	80	95	47	15	20	1000	Flat
WN10085	85	95	47	15	20	1000	Convex



**High Heat Option  
Available on Request**

**Minimum  
Quantities apply**

Manufactured by  
Manufactured by



IAN BROWN ENGINEERING cc



**Rybro**<sup>tm</sup>



## **Polypropylene Wheels**

### Uses:

- General purpose castor wheel
- Pallet truck wheel

Operating Temperature

**-20°C to 50°C**

### Advantages:

- Shock resistant
- Durable
- Resistant to most liquids
- Good allround performer
- Acid / Alkali resistant
- Good low temperature performer



**Low Price  
Option**

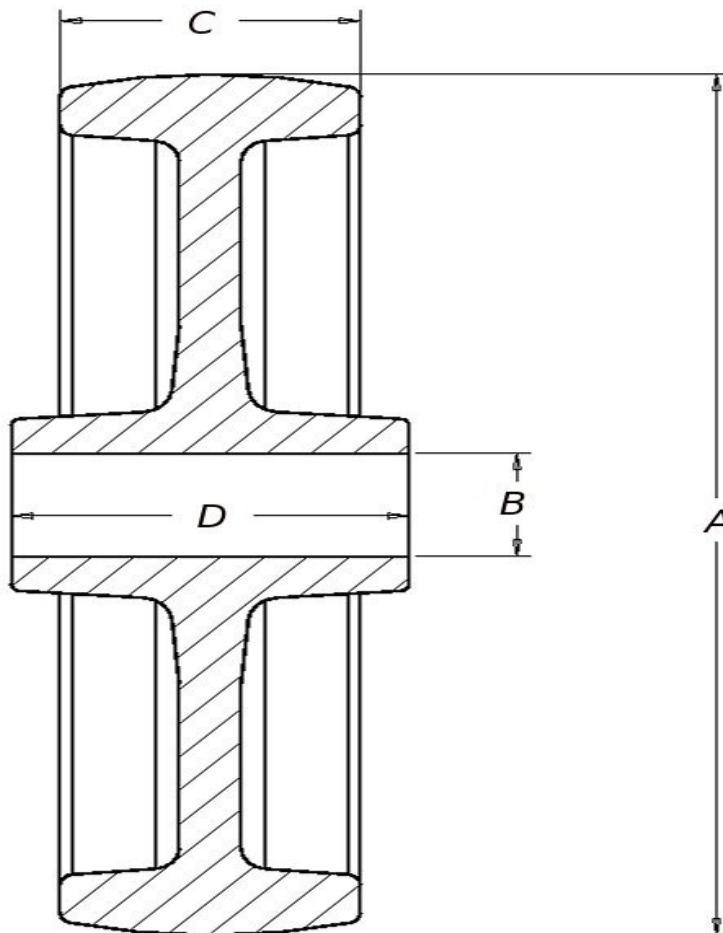
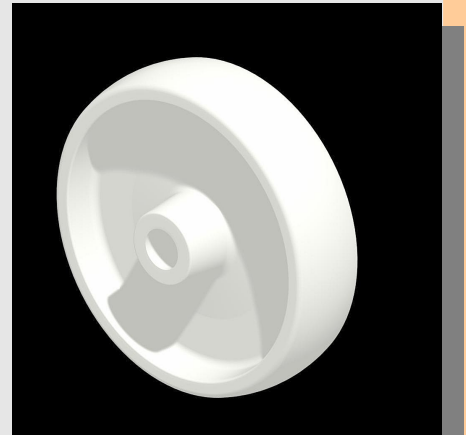
Manufactured by  
Manufactured by



IAN BROWN ENGINEERING cc

# Polypropylene Castor Wheels - technical specifications Standard Series

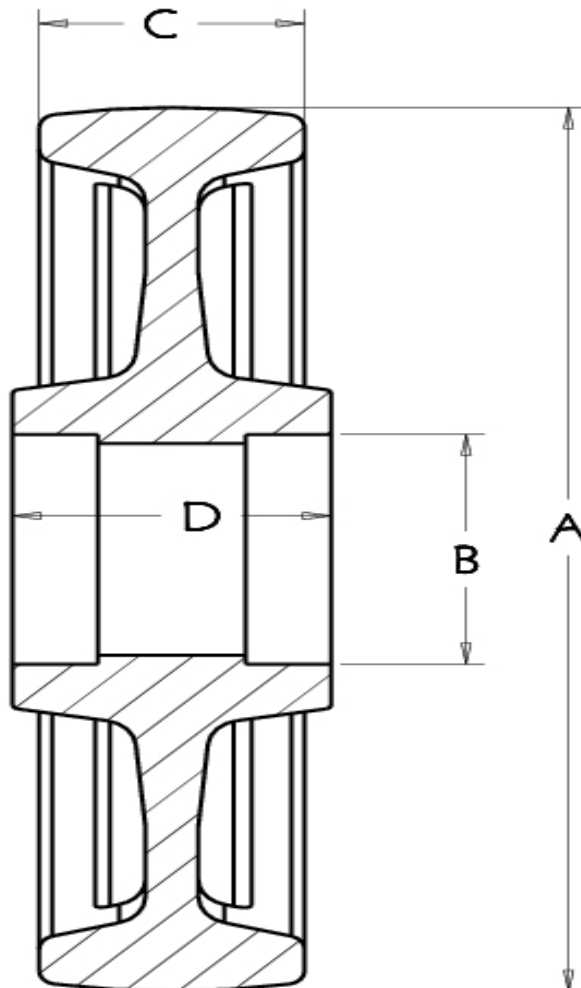
WP38	38	6.5	12	20	6	20
WP50	50	6.5	16	36	6	30
WP63	63	10	20	36	9.5	60
WP75	75	13	25	36	12.7	60
WP100	100	14.5	30	46	14	100
WP100U	100	12 or 12.5	30	38	11.5 or 12	100
WP125	125	14.5	32	46	14	150
WP150	150	19.5	35	60	19	200



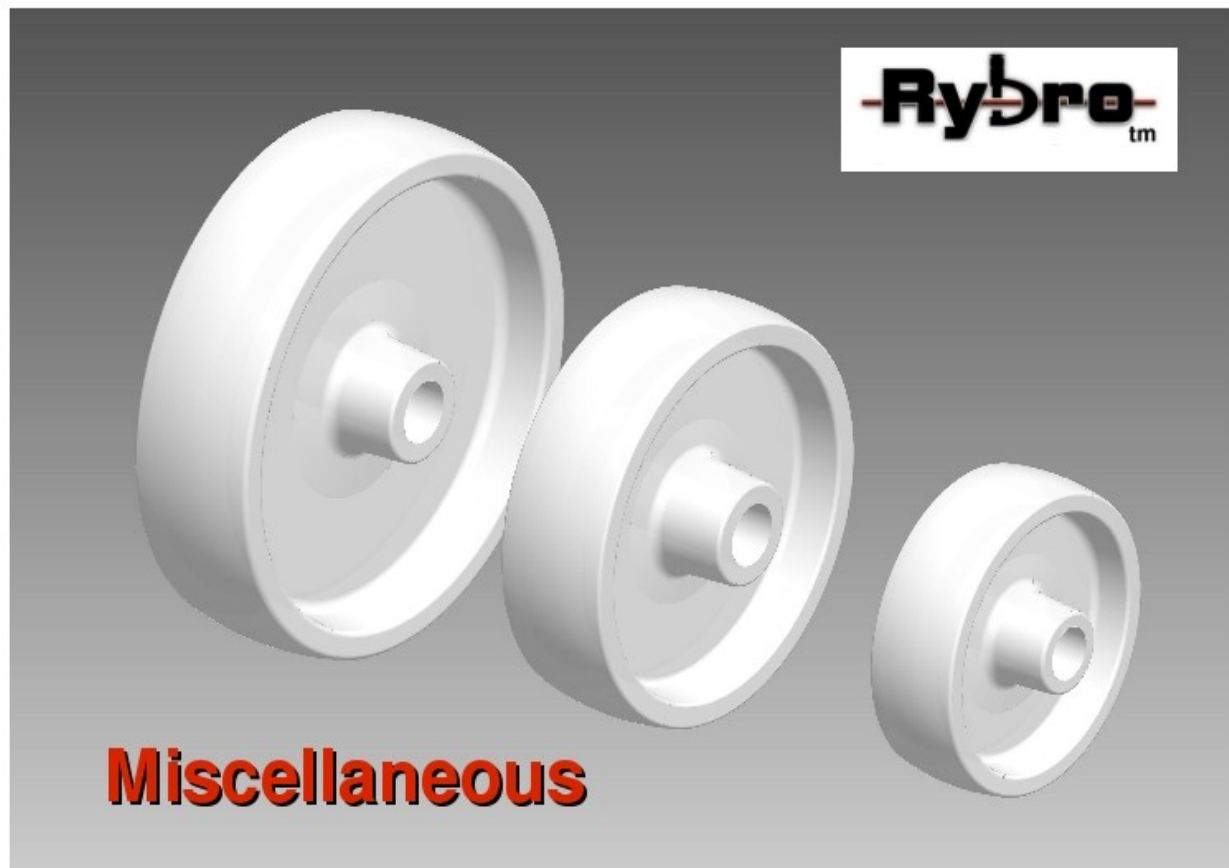
Manufactured by  
Manufactured by

# Polypropylene Castor Wheels / Steering Wheels - technical specifications (Heavy Duty)

Code	A	B	C	D	Load
WP150S	150	47	50	60	400
WP175S	175	47	45	56	400
WP190S	190	47	45	56	400



Manufactured by  
Manufactured by



**Rybroflex wheels** cost effective double bodied wheels  
**Mechabond Polyurethane wheels** high quality double bodied wheels  
**Roller assemblies** heavy duty, low profile assemblies  
**Split disks** for 8" / 6" rubber tyres  
**Axle Bushes** for use with steel split disks

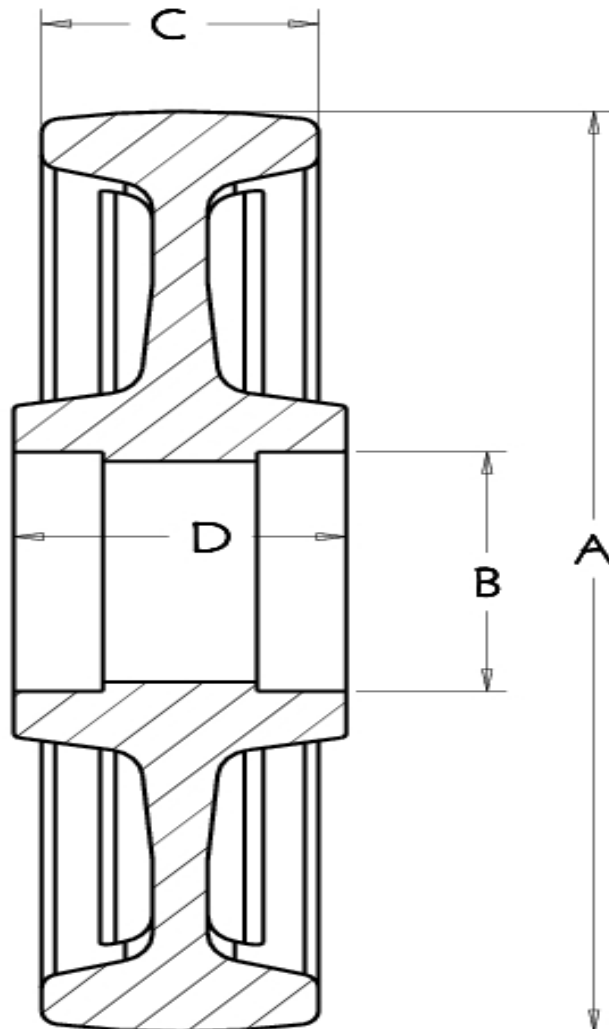
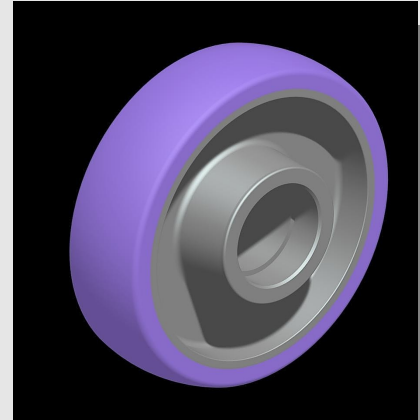
Manufactured by  
 Manufactured by



IAN BROWN ENGINEERING cc

## Rybroflex castor wheels

Code	A	B	C	D	Load
WRF200-6204	200	47	45	56	300
WRF200-PB/R	200	19	45	56	300
WRF150-PB/R	150	19	42	56	200
WRF150-6204	150	47	42	56	200



Operating Temperature

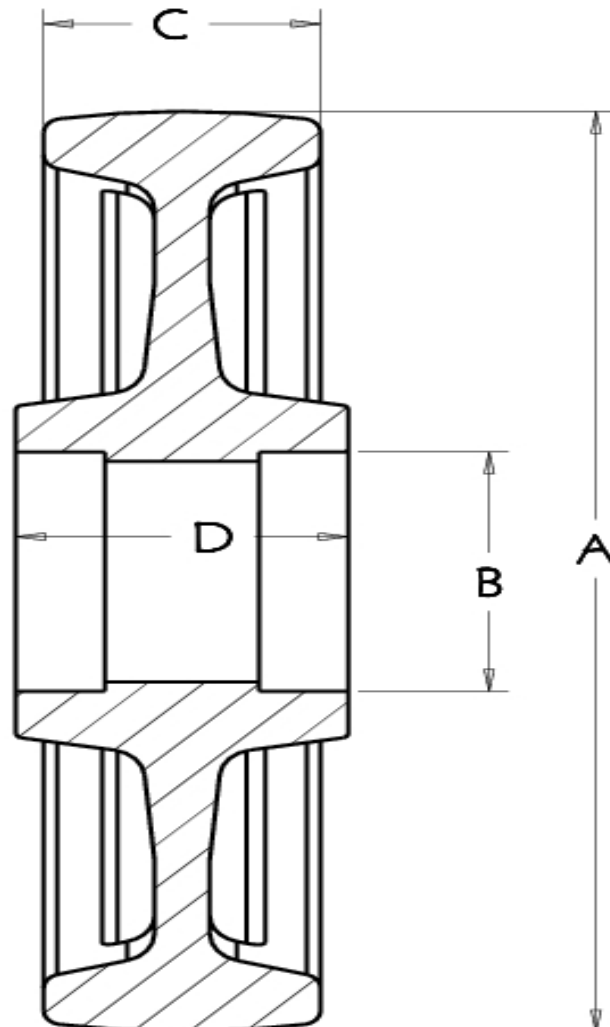
**-20°C to 50°C**

Manufactured by  
Manufactured by



## Polyurethane castor wheels

WPU200-6204	200	47	45	56	500
WPU200-PB/R	200	19	45	56	500
WPU150-PB/R	150	19	42	56	350
WPU150-6204	150	47	42	56	350
WPU100-PB	100	14	30	46	125
WPU100U-PB	100	12	30	38	125



Operating Temperature

**-20°C to 50°C**

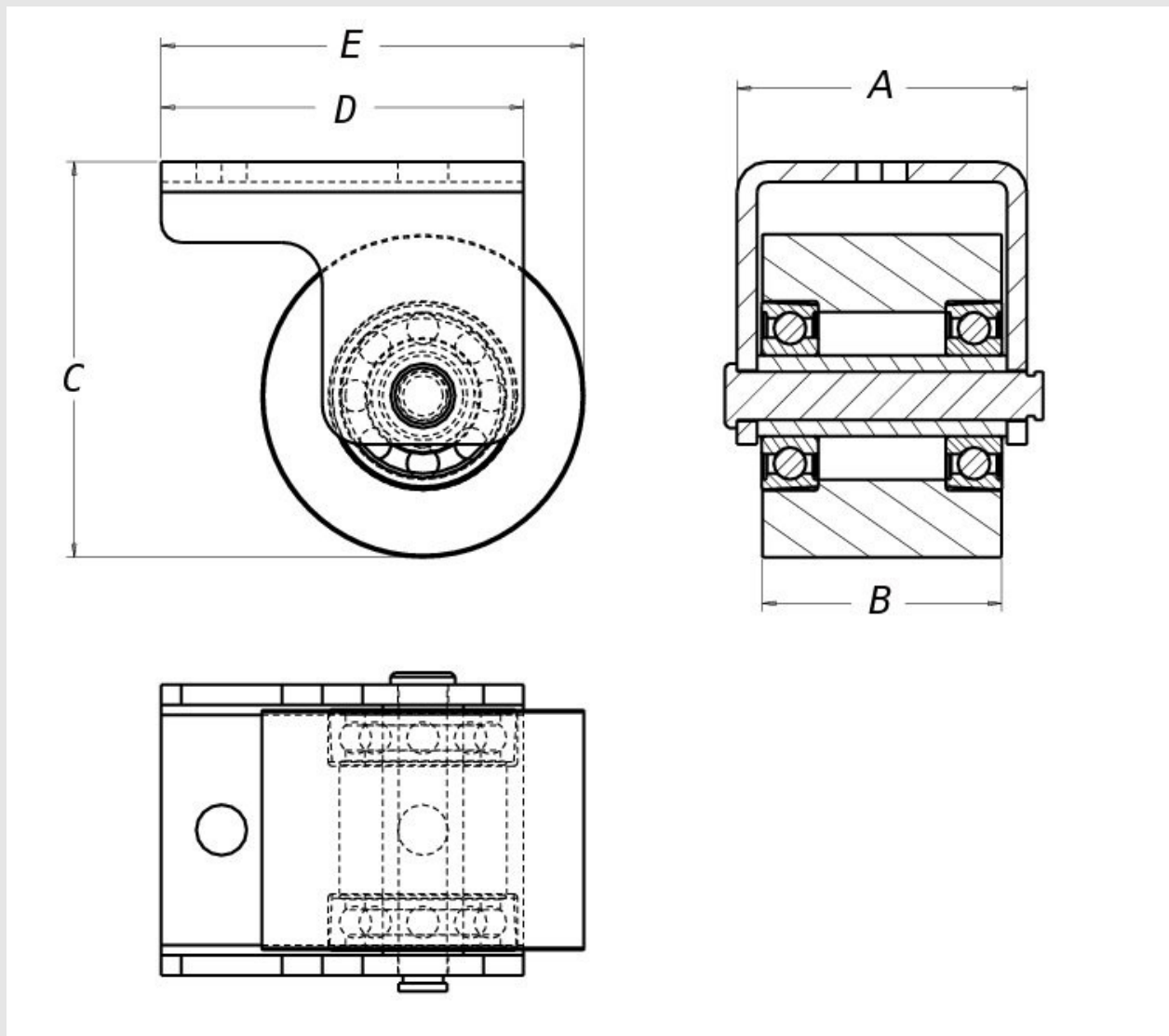
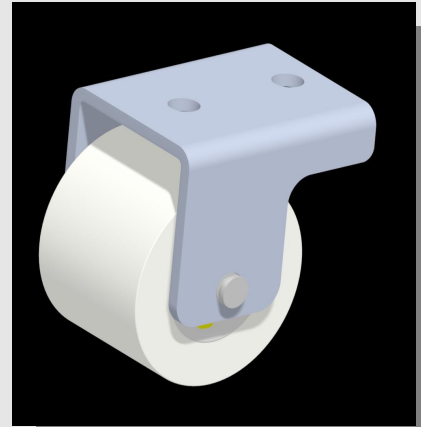
Manufactured by  
Manufactured by



IAN BROWN ENGINEERING cc

# 60 x 80 Heavy duty roller assembly

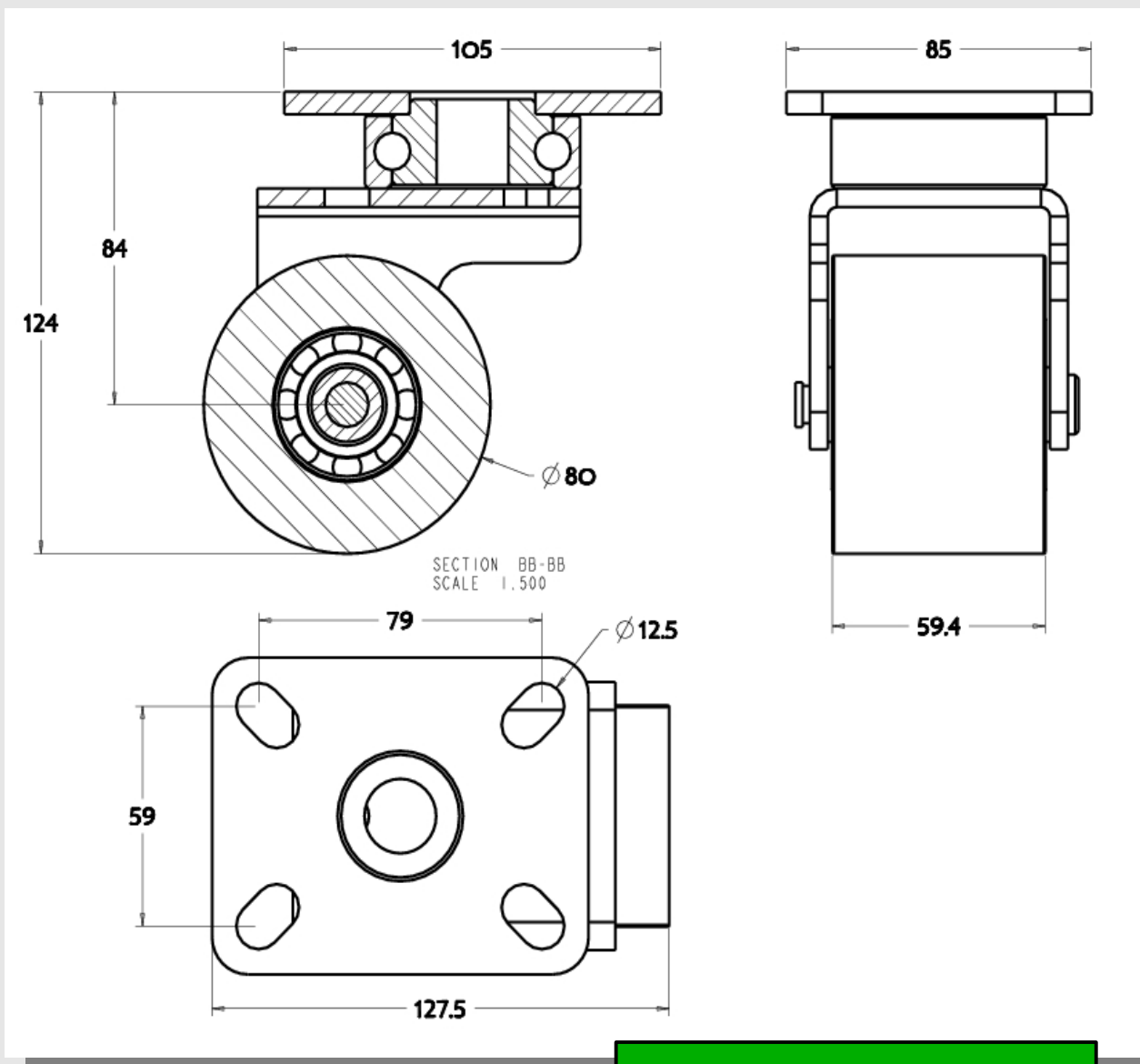
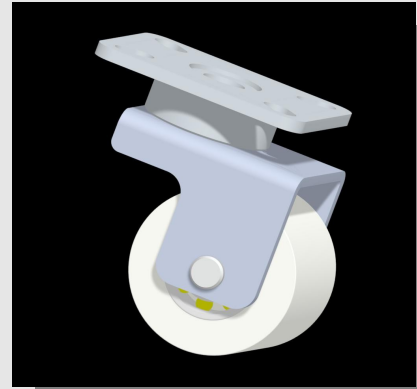
Code	A	B	C	D	E	Load
BHD6580	72	60	98	90	105	500



Manufactured by  
Manufactured by

# 60 x 80 Heavy duty castor

Code	Type	Load
BHD6580S	Swivel	500
BHD6580F	Fixed	500

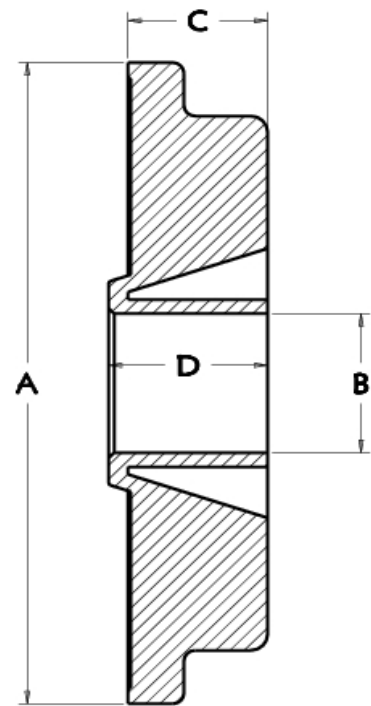
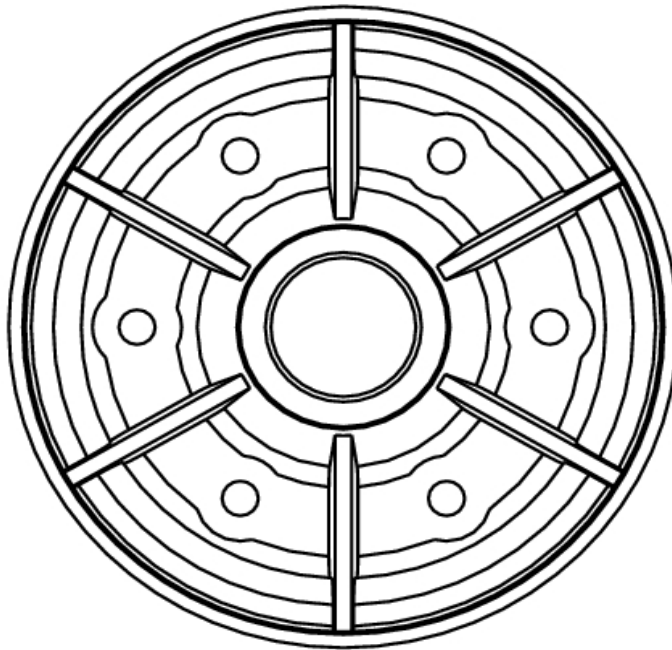
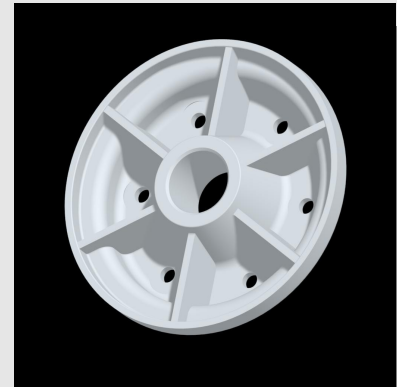


**Coming Soon!!!**

Manufactured by  
Manufactured by

## Split centre - technical specifications

Code	A	B	C	D	Load
CS8226	120	26	25	28	100
cs8219	120	19.5	25	28	100



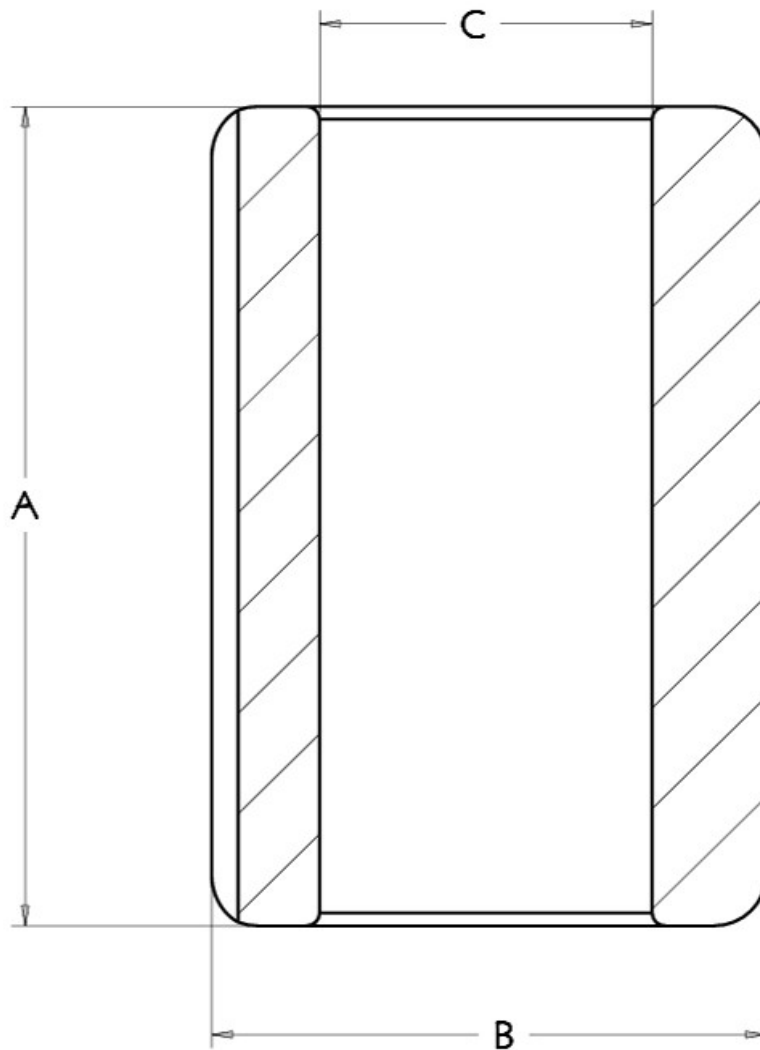
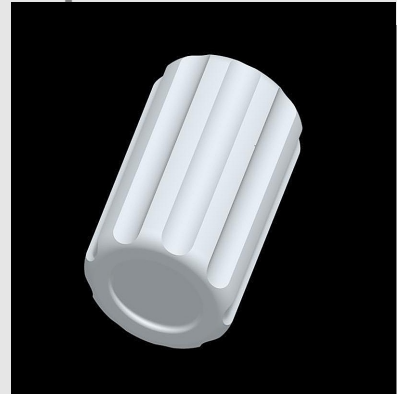
Manufactured by  
Manufactured by



IAN BROWN ENGINEERING cc

## Axle Bushes for split centre - technical specifications

Code	A	B	C	D	Load
BPP82	50	38	25.5	20	100
BPP1025	63	38	25.5	20	120
BPP143	75	50	25.5	36	150



Manufactured by  
Manufactured by